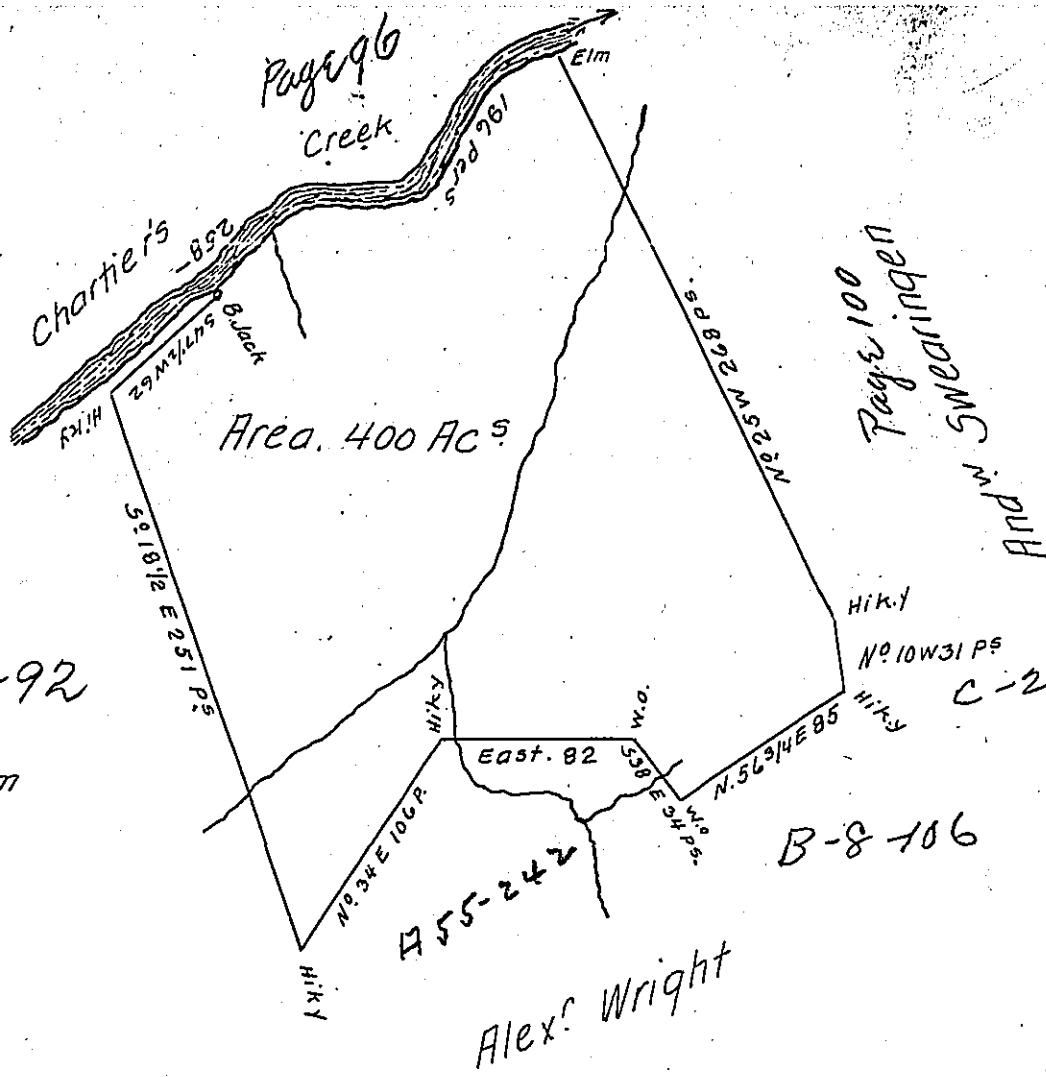


X 14  
99  
P6-312  
3-102



a-13-92

Courses up the Ck from  
the Elm.

S 77° W	23	P's
S 30° W	63	00
West	55	00
S 43 1/2° W	55	00
196-		

to ye Black Jack.

C-232-275

B-8-106

A Draught of a Survey lying on Chartiers Ck Washington County, cont'g  
400 Ac's; executed Jan'y. 31<sup>st</sup> 1786 in Pursuance of a Certificate granted  
And<sup>m</sup> Swearingen as Ass<sup>ee</sup> of Joseph Snodon by the Commiss<sup>rs</sup> appointed  
by Virg<sup>a</sup> to adjust the Titles to unpatented Lands in the Counties of Mon-  
ongalia, Yohg<sup>a</sup> & Ohio & regularly entered with the County Surveyor as ap-  
pears from the List of Entries transmitted from The Office of The  
Surv<sup>r</sup> Gen<sup>l</sup>. Ent<sup>d</sup> 27<sup>th</sup> Febr'y-80.

Jn<sup>o</sup> Lukens Esq<sup>r</sup> }  
Surv<sup>r</sup> Gen<sup>l</sup> }

Presley Nevill  
Matt<sup>w</sup> Ritchie  
Dep. Surv<sup>rs</sup>.

IN TESTIMONY that the above is a copy of the original remaining on file in  
the Department of Internal Affairs of Pennsylvania, made  
conformably to an Act of Assembly approved the 16th day of  
February, 1833, I have hereunto set my Hand and caused  
the Seal of said Department to be affixed at Harrisburg,  
this eighteenth day of October 1906.

*Laac B. Perry*  
Secretary of Internal Affairs.